

Commercial Corner



Professional RV Vendors Chapter

August, 2009

PRVVC's Food Drive a Success



The Shriners Donated \$701.

Janet Trannum of *Almost Heaven Microfiber*, Jan Williams of *JJ's Gold and Gems* and Nancy Fanelli of *Progressive Industries* and secretary of PRVVC headed the drive to col-

lect food and money for the *Bowling Green Christian Food Bank*. A beautifully decorated booth was set up for donations and the food drive was publicized by FMCA. The vendors and FMCA attendees donated over 1,000 pounds of food and \$1,200. Included in this amount was \$200 donated by PRVVC and \$701 donated by the Shriners. The volunteers of the food bank were

grateful for the donations as their cupboards were nearly empty because of these difficult economic times.



Janet Trannum at the PRVVC Food Bank Drop-off Booth

Inside this issue:

PRESIDENT'S MESSAGE, CONT.	2
HOSPITALITY CORNER	2
TREASURER'S REPORT	3
SECRETARY'S REPORT	3
PRVVC Credo	4
RALLY REPORT	4

President's Message

By Thomas Fanelli

I would like to thank all the members of PRVVC that attended the FMCA Bowling Green, Ohio rally for their participation in the PRVVC Marketplace. For those members that were not able to attend, you were missed and I sincerely hope to see you at the next rally in Albuquerque, N.M. in March.

There were over 2,700 coaches at FMCA's Bowling Green Bash rally and

all of the vendors I spoke with were having a successful show.

The FMCA Governing Board met on Monday, July 20th during the rally. Due to unforeseeable circumstances, our representative and alternate were not able to attend and I was asked to attend on their behalf. As you know, several offices were open for re-election. The new FMCA President is Charles M. "Charlie"

Schrenkel. The National Senior Vice President is now Judith (Judy) Czarsty. Joanne R. Durbin was elected to the office of National Secretary and Wilburn Young was elected to the National Treasurer office.

As some of you may know, I serve on the FMCA Commercial Council. For some time now, we have been trying to get a motion passed that the indoor vendors have

"Now the vendors will be open for three and one half days at the FMCA National Rallies."

President's message... cont.

“The food drive was such a great success, PRVVC will continue to work with local food banks at upcoming rallies.”



Enjoying the great dinner at the PRVVC meeting.



The food drive booth at Bowling Green FMCA

the same sales hours as the outdoor vendors. The outdoor vendors are allowed an additional half day for selling. While I was at the Governing Board meeting, they asked for new business, and I was able to propose that the indoor vendors have the same hours as the outdoor vendors. A motion was made by me and Len Bunts seconded it. After a very short discussion about the pros and cons, the Governing Board called for a vote. The motion passed by a very large margin. This became effective immediately so, now the vendors will be open for three and a half days, rather than the previous three days.

At the suggestion of Janet Trannum, PRVVC launched its first community service project which consisted of collecting food for the local Bowling Green Food Bank. This was done in conjunction

with FMCA who offered a discount on admission fees if members brought in a food donation. PRVVC operated the booth where non-perishable food donations, as well as cash donations were collected during the course of the rally. It is with great pleasure that I can report that we collected a total of \$1,205.43 in cash donations and a total of 1,093 pounds of non-perishable foods. Based on the success of this project, we have decided to continue to work with the local food banks in the rally cities. We will need volunteers to assist in manning the food bank booth in Albuquerque. Even an hour of your time will be greatly appreciated. Please contact Janet Trannum at 928-580-7394 or email her at j.trannum@gmail.com to volunteer.

PRVVC had its election and the results are as follows: Dwane Trannum as

Vice President of Northwest Area, Todd Coffelt as Vice President of Midwest Area, John Dunsmore as Vice President of Southeast Area and Nancy Fanelli as Secretary.



New officers Nancy Fanelli, Dwane Trannum, John Dunsmore and Todd Coffelt

Our PRVVC membership meeting took place at the University of Bowling Green and we had a lovely dinner catered by the University Catering Department. It seemed to be enjoyed by everyone so, funds permitting, food will be served at future membership meetings.

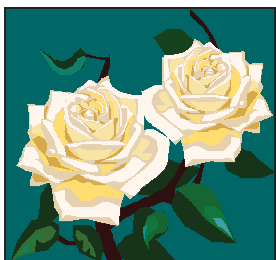
Hope to see you at Albuquerque and travel safely!

Thomas E. Fanelli

Hospitality Corner

By Janet Trannum

If you know of any of our members who need a card or prayers, please email me at j.trannum@gmail.com or call me at 928-580-7394.



Treasurer's Report

By Ann Hoffman

Things are very quiet now that the Bowling Green FMCA show is over. We have all of our bills paid and it won't be long before we will be collecting deposits for the Albuquerque show.

We are in good shape financially. As of August 5, 2009 we have \$11,480.20 in our bank account.

I would like to welcome seven new members:

Mary Findley of *Mary Moppins Co.*

Tom and Chris Bulinski of *Satellite Electronics, Inc.*

Mike and Cheryl Ackerman of *Mike's National RV Service*

Ed Annechino of *Diamond Shield*

Jamie Glazebrook of *RV*

Glass Solutions

Paul London of *Polson Motorcoach & RV Resort*

Robert and Kim Jandle of *Innovation in Pictures*

We hope to see all the new members at our next PRVVC meeting so everyone can meet you.

Happy travels,

Ann Hoffman

"We would like to welcome seven new members to PRVVC and hope to see them all at the meeting in Albuquerque."

Secretary's Report for Membership Meeting

By Nancy Fanelli

Tony St. Peter, Vice President of the Rocky Mountain Area, conducted the meeting because President Tommy Fanelli was attending the FMCA Governing Board Meeting, still in process during the PRVVC meeting.

The meeting was called to order and the minutes were read from the PRVVC meeting held March 16, 2009 in Perry, Georgia. A motion was made, seconded and voted to approve the minutes as read.

Ann Hoffman gave the **treasurer's report**. The PRVVC bank account balance as of March 1st, 2009 was \$10,922.16. There was income of \$36,397.50 and expenses of \$35,927.10.

The bank balance as of July 17, 2009 was \$11,392.56.

Tony recognized several new members and they were asked to introduce themselves and briefly describe their business. The new members were informed that they are entitled to one free name badge and to see Susan Cox or **Dorothy Loll with "Badges R Us" to place their order(s)**.

The vendors who had corner booths at this rally were reminded to pay the \$25 fee to Ann Hoffman if they hadn't done so already.

Tony reported that Jane Lihou had graciously volunteered to edit and publish the PRVVC Newsletter. She was introduced to the group and she shared her e-mail (jlihou@aol.com) for mem-

bers to pass along information for the newsletter.

During a brief break of the Governing Board Meeting, Tommy stepped in and reported that he had just made a motion to the Board to allow the inside vendors to have the same operating hours as that of the outdoor vendors. The motion was seconded and after discussion, a vote was taken and **the motion passed "with flying colors"**. As many of you know, the outdoor vendors are open an additional half day at the rallies. This is effective immediately.

Several members requested that someone explain how the ticket drawings worked in the PRVVC Marketplace. Janet Trannum explained that each vendor is given tickets that

can be given to those people that either make a purchase or simply visit the vendors' booths. At the end of the day the vendors turn in these tickets for a daily-drawing. The winning ticket number is posted at a designated booth. The winner is awarded a certificate worth \$20 that can be redeemed with any vendor in the PRVVC Marketplace. Once the certificate is redeemed with a PRVVC Marketplace vendor, the vendor then turns in the certificate to Ann Hoffman and she reimburses the vendor for the \$20.

With no further business, a motion was made and seconded to adjourn the meeting. The members then enjoyed a lovely dinner that was catered by the Bowling Green catering staff.

President
Thomas Fanelli
Progressive Industries
919-462-8280

Secretary
Nancy Fanelli
Progressive Industries

Treasurer
Ann Hoffman
Hildale Enterprise

Vice President
International Area
Todd Coffelt
Performance Products

Vice President
Northeast Area
Larry Williams
JJ's gold & Gems

Vice President
Eastern Area
Bob Ingalls
RV Innovations

Vice President
South Central Area
Al Hoffman
Hildale Enterprises

Vice President
Great Lakes Area
Jan Williams
JJ's Gold and Gems

Vice President
Rocky Mountain Area
Tony St. Peter
Home Mats

Vice President
Northwest Area
Dwayne Trannum
Almost Heaven Microfiber

Vice President
Southeast Area
John Dunsmore
Eagle Point Trading Co.

Vice President
Midwest Area
Todd Coffelt
Performance Products

Vice president
Western Area
Janet Trannum
Almost Heaven Microfiber

National Director
Bob Ingalls
Bob's Enterprises, LLC

Alternate National Director
Larry Williams
JJ's gold and Gems

Marketplace Coordinator
Jan Williams
JJ's gold and Gems

Professional RV Vendors Chapter (PRVVC) is a non-profit Chapter of FMCA. The chapter's goals are to bring friendship and fellowship to its members and to represent the members at FMCA with questions and concerns.

The dues to be a member are \$30.00 / year, due on January 1st of each year and payable to the treasurer.

PRVVC has two meetings every year, one at each of the International FMCA Rallies. It is important that you attend these meeting, if possible. These meetings are followed by a social and dinner.

There are ten chapter areas, each with an elected vice president who is responsible for PRVVC socials at regional rallies.

All PRVVC offices are volunteer positions.

We're on the Web

prvvc.com

Bowling Green Rally a Success for Most Vendors

The feedback from vendors at the FMCA International Rally in Bowling Green was very positive. There were approximately 2700 coaches registered and attendance at the vendor booths was steady throughout the three days of the rally.

After some initial confusion about getting around (not many parking spaces near the venues) attendees showed up by the hundreds for the seminars.

Many vendors stayed in the area to attend the Newmar Rally in Goshen, Ind. This rally started out

very slow for most vendors but rallied on the last day and a half. There were many tours and local events for the attendees that competed with the vendors.

Let's hope we have turned the corner in these tough economic times.

Upcoming FMCA Rallies:

South Central Area Rally, Shawnee, Okla., Sept. 23 - 26, 2009

Rocky Mountain Ramble - Farmington, N.M. - Oct. 13 -17, 2009

Western Area Rally - In-dio, Cal. - Jan. 6-10, 2010

INTO Area Rally - Quartz-site, Ariz. - Jan. 20-24, 2010

Southeast Area Rally - Brooksville, Fla. - Feb. 3-7, 2010

Great Lakes Area Rally - Barrien Springs, Mich. - May 27-30, 2010

Eastern Area Rally - Richmond, Va. - June 10-13, 2010

Midwest Area Rally - Elkhorn, Wis. - June 9-12, 2010

Northeast Area Rally - Essex Junction, Vt. - July 21-24, 2010